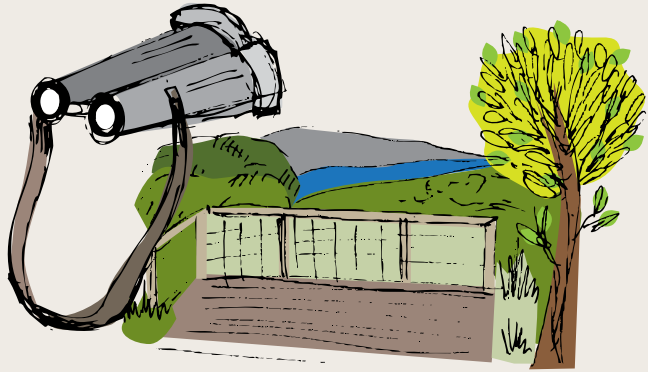


TOP VIEWS DANENONG RANGES



TO MELBOURNE



TOP VIEWS DANDENONG RANGES

The views from the Dandenong Ranges are beyond breathtaking. As varied as they are stunning you will be amazed at just how far the eye can see. Undulating fields, mountain ranges and huge patchwork quilts of colour guide you through to the twinkling lights of the city. Be transported, be amazed and enjoy the magic carpet ride that will unfold before your very eyes.

Sky High Mt Dandenong

First established as a survey point in 1861 this historic area has undergone a lavish and sympathetic redevelopment. Escape the noise and pressures whilst sitting here on the uppermost reach of the Dandenong Ranges. After sunset the southern sky, brilliant in the clear mountain night, is imitated by a spectacular carpet of city lights.

The kids will love to have their photo taken on the Giants Chair or next to Percy Possums House or get lost in the Maze.

**fees apply*

Johns Hill Reserve Lookout

Trig Point

Johns Hill Reserve is located on a ridge extending to the south-east from the main Dandenong Ranges massif in the pretty town of Kallista.

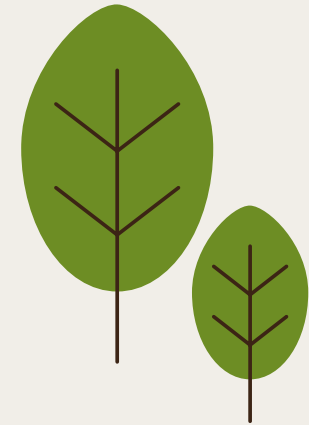
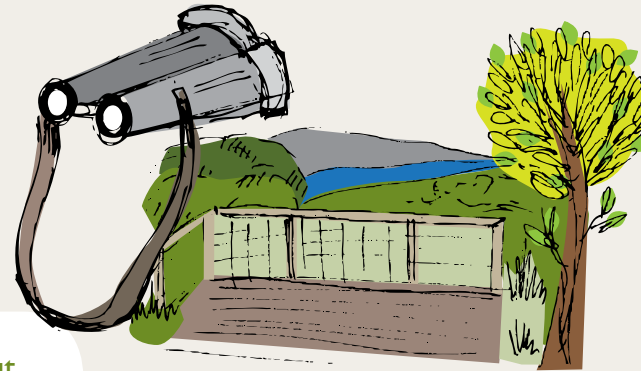
The lookout on the summit offers magnificent panoramic views to the distant Yarra Ranges National Park, the Kinglake National Park, Mt St. Leonard, the Dandenong Ranges National Park, the Cardinia Reservoir, the Silvan Reservoir, nearby farmlands, Port Phillip Bay and Westport Bay.

Woolrich Lookout

RJ Hamer Arboretum

One of the secrets of the Dandenong Ranges. The Woolrich Lookout in the RJ Hamer Arboretum has panoramic views stretching out over the east of the Dandenong Ranges across the Yarra Valley to the Great Dividing Range.

Take a quiet, peaceful stroll along the many walking tracks and roads of the Arboretum or sit and take in the tranquil beauty and stunning scenery. We are sure there have been the more than one wedding proposal here on a romantic picnic.



Kalorama Lookout (Five Ways)

Boasting spectacular views over Silvan Reservoir and the south-eastern face of the Dandenong Ranges, Kalorama Park is perfect for picnics, barbecues or simply relaxing whilst enjoying the magnificent surrounds. Kalorama Lookout is located on the Mount Dandenong Tourist Road at the Five Ways intersection. The lookout provides one of the finest vantage points to view the Dandenong Ranges, surrounding foothills and Yarra Ranges in the distance.

National Rhododendron Gardens

The Lyrebird Garden and Serenity Point provide visitors with magnificent views over Silvan Reservoir, the Yarra Valley, Warburton Ranges and Mt Baw Baw. These spectacular views are made even more stunning when taken in from such a wonderful vantage point as these gardens.

Trig Point Lookout

Churchill National Park & Lysterfield Park

Trig Point Lookout is the highest point (218m) in the central section of the Lysterfield Park. There are a variety of different tracks to reach to the lookout, the shortest way is to enter the park at the Churchill Visitors Area off Churchill Park Drive. Fantastic views from this vantage point. This section of the Park caters to cyclists also as it includes the Commonwealth Games Mountain Bike Track.

Puffing Billy Railway

Everyone knows the famous Puffing Billy Railway as a top experience to remember your trip to the Dandenong Ranges. If its views you want then you can't go past the section from Emerald to Gembrook as the train passes through the flower fields and potatoes fields where views stretch to the Great Dividing Ranges and down to Western and Port Phillip Bay. On a clear day, you will have extensive views to Port Phillip Bay, Arthurs Seat and Westport.